

# SPF SUNROX Premium-cut Filter

## ●ワイヤーカット放電加工機用フィルター

- ウレタン天板を採用し、約 40%の軽量化に成功！オペレーターの作業負担を低減します。
- 最も効率の良い濾紙の折り方により、濾材のデッドスペースを最小限に抑え、寿命を最大限に引き出せます。
- 従来の鋼板製の天板とは違い、処理の際にも容易に解体できます。
- カプラーを脱着式にした為、カプラーは再利用でき、環境にも配慮しています。
- 性能は従来の商品同等、長寿命タイプのフィルターです。



Light weight and easy handling.

Adopting urethane material for top & bottom plates succeeded in reducing 40% of weight.

You can handle easily. Unlike metal type of filter, you can break down the filter easily when you dispose.

Long life

By the most efficient paper folding, the dead paper area can be minimized and get the maximum life time.

Detachable & Reusable coupler

Adopting detachable & reusable coupler (Brass), good for the environment and saving the cost.



**SPF-410**  
φ300×φ29×250



**SPF-420**  
φ340×φ45×300



**SPF-420S**  
φ340×φ45×300



**SPF-430**  
φ340×300



**SPF-430F**  
φ340×300

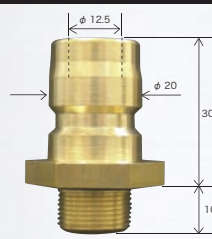


**SPF-430H**  
φ340×300

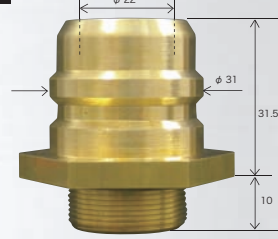


**SPF-460**  
φ300×250

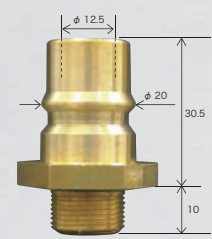
### COUPLER (With O-ring)



Coupler for SPF-430,460



3/4Coupler for SPF-430F



Special Coupler for SPF-430H

Maker	Model No.	Size (mm)	Applicable Machine	Coupler
MITSUBISHI	SPF-410	φ300×φ29×250	F, F1, G, H, H1, C, HA, U, SX, 110PA	without
	SPF-460 SPF-460(N)	φ300×250	SB, B, SA, A, SZ, Z, AD, MQ, 90PA	with
	SPF-430 SPF-430(N)	φ340×300	CX, FX, FX-K, PX, QA, RA, FA, FA-V, FA-P, PA, FA-S, BA, NA, MV	with
SODICK	SPF-420S	φ340×φ45×300	BF, HBW, AP, A, AQ, AD, AG, SL	without
FANUC	SPF-420	φ340×φ45×300	O, P, Q, R, S, T, V, W, α-A, B, C, iA	without
	SPF-430F SPF-430F(N)	φ340×300	α-iB, iC, iD, iD2, iE, C-iA	with 3/4
MAKINO	SPF-460 SPF-460(N)	φ300×250	EE, EQ, EH, EQH, EQF, MU	with
	SPF-430 SPF-430(N)	φ340×300	EC, ECQ, U, EU, SP, W, DUO, U3/U6	with
HITACHI	SPF-410	φ300×φ29×250	H-CUT304(N,P,S,HP), 406(N,B,P,AWF,S)	without
	SPF-430H SPF-430H(N)	φ340×300	Q Series H-CUT203, 254, 345, 355	with Special
BROTHER	SPF-410	φ300×φ29×250	HS	without
SEIBU	SPF-430 SPF-430(N)	φ340×300	EW, M	with

※ (N) タイプ は脱着式のカプラー無しになります。カプラーをユーザー様で取り付けてご使用下さい。  
(N) type means "without coupler". Please attach the coupler by yourself.

# SAF SUNROX Advanced Filter

## ●ワイヤーカット放電加工機用フィルター

- 濾紙の特殊折加工により、濾過面積を大幅に増やしました。  
(弊社従来タイプの 20 ~ 30% UP)
- 水流の拡散化を行い、濾過効率を上げています。
- ライフは、弊社従来タイプより 20 ~ 30% アップ。

By Special folding paper technology, succeeded in having paper area increased.

Filtration performance is much improved, then wear life is 20-30% LONGER than other conventional filters.



SAF-20  
φ 300× φ 29×500



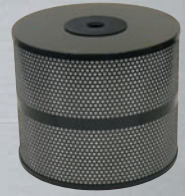
SAF-30  
φ 300× φ 46×300



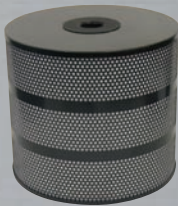
SAF-31  
φ 300×300



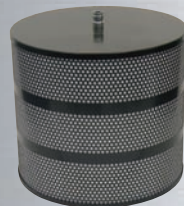
SAF-40  
φ 300×500



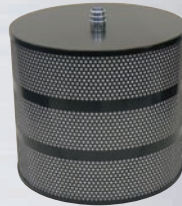
SAF-41  
φ 300× φ 29×250



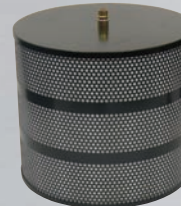
SAF-42  
φ 340× φ 45×300



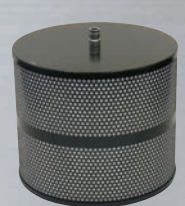
SAF-43  
φ 340×300



SAF-43F  
φ 340×300



SAF-44  
φ 340×300



SAF-46  
φ 300×250

Maker	Model No.	Size (mm)	Applicable Machine	Coupler
MITSUBISHI	SAF-41 SAF-20	φ 300×φ 29×250 φ 300×φ 29×500	F,F1,G,H,H1,C,HA,U,SX,110PA	without
	SAF-46 SAF-31 SAF-40	φ 300×250 φ 300×300 φ 300×500	SB,B,SA,A,SZ,Z,AD,MQ,90PA	with
	SAF-43	φ 340×300	CX,FX,FX-K,PX,QA,RA,FA,FA-V,FA-P,PA,FA-S,BA,NA,MV	with
SODICK	SAF-42 SAF-30	φ 340×φ 45×300 φ 300×φ 46×300	BF,HBW,AP,A,AQ,AD,AG,SL	without
FANUC	SAF-42 SAF-30	φ 340×φ 45×300 φ 300×φ 46×300	O,P,Q,R,S,T,V,W,α-A,B,C,iA	without
	SAF-43F	φ 340×300	α-iB,iC,iD,iD2,iE,C-iA	with 3/4
MAKINO	SAF-46 SAF-40	φ 300×250 φ 300×500	EE,EQ,EH,EQH,EQF,MU	with
	SAF-43	φ 340×300	EC,ECQ,U,EU,SP,W,DUO,U3/U6	with
HITACHI	SAF-41 SAF-20	φ 300×φ 29×250 φ 300×φ 29×500	H-CUT304(N,P,S,HP) H-CUT406(N,B,P,AWF,S)	without
	SAF-44 SAF-39	φ 340×300 φ 300×500	Q Series H-CUT203,254,345,355	with Special
BROTHER	SAF-41 SAF-20	φ 300×φ 29×250 φ 300×φ 29×500	HS	without
SEIBU	SAF-43 SAF-40 SAF-31	φ 340×300 φ 300×500 φ 300×300	EW,M	with

# OMF SUPER FILTER

## ●ワイヤーカット放電加工機用フィルター

- 好評を得ている OMF シリーズに、更にロングライフタイプを追加しました。
- 濾過スタート時の濁りが極めて少なく、面粗度、二次放電、樹脂の寿命、クリーン槽の透明度等の面で性能アップしました。
- ON・OFF により、濾材表面のチップが脱落し易く、濾過圧力が復帰し易くなりました。

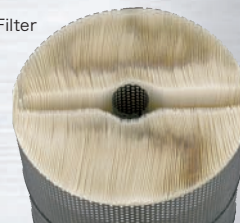


Maker	Model No.	Size (mm)	Applicable Machine	Coupler
MITSUBISHI	OMF-250A OMF-500A OMF-250A-4-2.6	φ300xφ29x250 φ300xφ29x500 φ300xφ29x250	DWC-70,90,90P,110,200,300F DWC-70,90,90P,110,200,300G DWC-70,90,90P,110,200,300H DWC-70,90,90P,110,200,300C DWC-90,110C1,90,110C2 DWC-90,110,200,300,400,500HA DWC-90,110,200U DWC-300M,DK3000,WC110F,200F,H55WC6 SX Series SX1,SX10,SX10P,SX2,SX20,SX20P	without
	OMF-250AK OMF-250AK-4-2.6 OMF-500AK	φ300x250 φ300x250 φ300x500	DWC-90B,90SB,110A,110SA DWC-90Z,90SZ,90SZP,110Z,110SZ,110SZP DWC-110PA	with
	OMF-340FK OMF-340FK-125 OMF-340FK-VL	φ340x300 φ340x300 φ340x300	CX Series CX10,CX20,CX2. FX Series FX10,FX20,FX30. FX-K,QA,RA,FA,FA-V,FA-P,FA-S,PA,BA,NA,MV Series	with
	OMF-340FK-7-125	φ340x300	For High Precision	with
MAKINO	OMF-250AK OMF-250AK-4-2.6 OMF-340FK OMF-340FK-125 OMF-340FK-VL OMF-500AK	φ300x250 φ300x250 φ340x300 φ340x300 φ340x300 φ300x500	EE-3,6,6L,EQ-5,EH-3,6,EQH-5 EQF-5,MUQ-32,MU-43 EC-32,EC-64,ECQ-53,U-53,U-32,U-53K,U-32K SP,W,DUO,U3/U6 Series	with
BROTHER	OMF-250A OMF-500A	φ300xφ29x250 φ300xφ29x500	HS-300,350,3100,3600,50A	without
HITACHI	OMF-250A OMF-500A	φ300xφ29x250 φ300xφ29x500	H-CUT304-(N,P,S,HP) H-CUT406-(N,B,P,AWF,S),H-CUT460	without
	OMF-250AK OMF-250AK-4-2.6 OMF-500AK OMF-340FK OMF-340FK-125	φ300x250 φ300x250 φ300x500 φ340x300 φ340x300	Q Series H-CUT(3,4,5,6,8,3HP,203)-Q CUT-254RS,355RS,203M20,203Q20	with Special
SEIBU	OMF-340FK OMF-340FK-125 OMF-340FK-VL OMF-500AK	φ340x300 φ340x300 φ340x300 φ300x500	EW,M	with
SODICK	OMF-340F OMF-340F-125	φ340xφ46x300 φ340xφ46x300	A300,A350/A350W,A500/A500W A600/A600W,A750/A750W,A1000W A500P/A500WP,A600P,A600WP.AQ,AD,AG,SL Series	without
FANUC	OMF-340F OMF-340F-125	φ340xφ46x300 φ340xφ46x300	Model:O,P,Q,R,S,T,V Mate:W0,W1,W2,W3 α-B,C Series	without
	OMF-340FK(3/4) OMF-340FK-X	φ340x300 φ340x300	α-iB,iC,iD,iD2,iE,C-iA Series	with 3/4

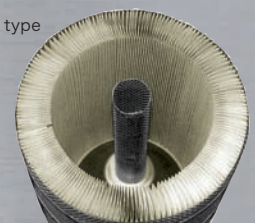
Remarks:

- 4-2.6 type & 125 type filters have larger filter paper area than other filters.
- When you order filter for HITACHI ,please indicate "for HITACHI" because coupler is different from others.

OMF Filter



Conventional type



# FILTER FOR WIRE EDM

## ●ワイヤーカット放電加工機用フィルター

Maker	Model No.	Size (mm)	Applicable Machine	Remark
MITSUBISHI	SW-17	φ260xφ29x340	N Series DWC[70,90,90P,110,200]N	External
	SW-20	φ300xφ29x500	DWC[70,90,90P,110,200,400]F. DWC[90,110,200]U. DWC[90,110]PH DWC[70,90,90P,110,200,400]G. DWC[90,110,200,300,400,500]HA DWC[70,90,90P,110,200,400]H. DWC[90C1,90C2] DWC[110C1,110C2]	Internal
	SW-40	φ300xφ59x500	DWC[90B,90SB,90Z,90SZ,90SZ-P,110Z,110SZ,110SZ-P] DWC[110A,110SA,110PA]	In/Ex
FANUC	SW-30	φ175xφ75x750	MODEL[K,L,M,N].MODEL-SP.MODEL-C-750E	External
	SW-25	φ340xφ46x450	MODEL[O,P,Q,R,S,T,V].TAPECUT[W0,W1] TAPECUT[W2,W3,W4].CUTMATE,CUTα-0A	Internal
MAKINO	SW-22	φ190xφ110x500	EC3025	External
	SW-23	φ260xφ46x280	EC[3025,3040,3141,7050,3141S,108].EA3040	External
	SW-38	φ300xφ29x500	EE3,EE6,EE6L,EH3.6,EQ5,EQH5,EQF5,MU43,MUQ32,EC32,EC64,ECQ53	In/Ex
HITACHI	SW-17	φ260xφ37x340	H-CUT304	External
	SW-26	φ300xφ46x340	H-CUT34[HP,N,NP,P,S].H-CUT406[B,N,P,S]	Internal
	SW-35	φ300xφ59x500	H-CUT203M,203Q,205	In/Ex
	SW-39	φ300xφ59x500	Q Series H-CUT[3Q,4Q,5Q,6Q,8Q].H-CUT3HP	In/Ex
	SW-23	φ260xφ37x280	PW500B	External
JAPAX	SW-02	φ150xφ34x345	AT50,ELVY,EXP,EXP-20,L300A,LDM[35,50,FA].LF3A,LH3A,LL13B,LM40/3 LPA3A,LS[250,350,500,800,1000].LSP3A,LT3A,LU3B,LU30B,LUX3,LV3 LXR[35,50,80,100].LX6000M/4,LXF[FA,35,50]	External
	SW-23	φ260xφ37x280	JL[65,85].LXH50,LA500A	External
	SW-37	φ340xφ46x450	JL[20,30,55]	Internal
SODICK	SW-02	φ150xφ34x345	'87.6 [330,453,654]W.AW[330,453].EPOC[300,500,600,800] '87.6 AP[150,300]G3A,GOW[3,5].EPOC[3W,3WS,5W40W]	External
	SW-23	φ260xφ37x280	A350,A350S,A350W,A350SSW,A500,A500W After'87.7 AW[330,453]with Water oil application '87.7 AP[200,300,330,450,550] '87.7 EPOC[300,500,600,800,1100]	External
	SW-37	φ340xφ46x450	'91.11~A Series,AA Series [A300W,A320D,A350,A350W,A350S,A350SS,A350SSW,A500,A530D,A600W A600W,A750W,A1000W] BF250,BF275,BF280L,BF320L	Internal
SEIBU	SW-02	φ150xφ34x345	EW-[25,30N,35,250,400,600]. EW-[300,400,600,1000]F EW-[300,450,600,700,1000]K1.EW-[450,600,1000]K1FA EWP-[300A,300B]	External
	SW-40	φ300xφ59x500	A Series EW-[A5,A5S,A7S].EW-C3,EWP-B3S K2 Series EW-[300,450,600,700,1000]K2	In/Ex
	SW-40M	φ300xφ59x500	A Series EW-[A5,A5S,A7S].EW-C3,EWP-B3S K2 Series EW-[300,450,600,700,1000]K2	In/Ex
AMADA	SW-02	φ150xφ34x345	WP-[AM1,AM2,AM3]	External
BROTHER	SW-27	φ260xφ46x400	HS-100	Internal
	SW-20	φ300xφ29x500	HS-[300,350,3100,3600,5100]	Internal
CHARMILLES	H15190/16	φ150xφ31x375	AM370,ROBOFIL[100,200,290,310,330,400,510,600,1020,2020,4020,6020]	External
AGIE	H15190/16	φ150xφ31x375	AGIECUT[100D,150,200D,250,300D].EVOLUTION[2,3].DEM[215,250,315,700]	External
WASHINO	SW-33	φ260xφ50x400	TW-[43,530].FW530	External

# FILTER FOR EDM SINKING

## ●型彫放電加工機用フィルター

Maker	Model No.	Size (mm)	Applicable Machine	Remark
MITSUBISHI	SO-16	φ260xφ29x340	DK[33K,120,140,140NC,260,260NC,280,280NC,360,360NC,380,700,700NC,760,2000] DM[30K,33K,100,250,250K,260,280,280K,300] DX[140,140NC,280,360,700,2000] DP-431	External
	SO-24	φ260xφ29x340	M Series M[30,30P,30PC6,35,35C3,35C6,55,55C3,55C6,75,75C6,85,85K,85C6] J Series M[35,55,65]J V Series V[25,35,55,65,85,115,200,300]F.V[25,35,55]FS.V[25,35,55,65]FH DP-431	Internal
	SO-18	φ150xφ35x355	M[20,25,25C2,25C3,25C5,25C6] DK-140	Internal
	SO-36	φ300xφ59x500	K Series M[25,35,55,65,115]K KS Series M[25,35,55,65]KS S Series M[25,35,55]S W Series M[35,55,65,85,115]W M-[25KC4,30PKC7,35KC7,35SC7,55WKC7].EML-20	In/Ex
	SO-42	φ300xφ46x330	EX Series [EX8,EX8E,EX30,EX30E] VX,VPX,AD-MQ,EA,VA,VH,MA Series	In/Ex
	SO-42-1	φ300x300	EA-V,EA-P,MX Series	Internal
MAKINO	SO-09	φ260xφ46x280	EDNC Series EDNC[22,32,32H,32AB,32A16,40,43,64,64H,64A8,65,85,85W,106,106W,156,156W,207,2015-2H] EH30,EM30,EM330,ED330,EDGE1,EDGE2,EDGE3	External
	SO-12	φ150xφ72x450	ED22	External
HITACHI	SO-10	φ260xφ37x340	HABM II,HEMS220 II,HEMS230II,HEMS30II,HEMS3,HEMS30	External
	SO-18	φ150xφ34x355	D[10,20].EMS-15N,H-2M,KE-56,ED-28	External
	SO-34	φ300xφ46x340	H[DSO2N,DSO2R,DSO2PFS,DSO2PHS,DSO2S-MP30,DSO2SR-MP30,DS10N,DS10NP30,DS10P,DS10R,DS10PFS,DS10S-MP30,DS10SR-MP30,DS12R,DS20PFS,DS20PHS,DS20PMS,DS20S-MP30,DS20S-RMP30,DS20R,DS100H,DS100HS]	Internal
JAPAX	SO-12	φ150xφ72x450	DP[10,10WB,20,25,30,35,35P,45NC,85NC,125,200,275] ADX.JX[2,3,3R,4,4R].DX-[25,25NC,30,45,45NC,80] DXC[25,25M,30,45].DHW200A,SDX30NC,DTN1,DC35,55	External
	SO-08	φ260xφ37x280	DH[150,300B].D-100M,DX[55NC,85NC].DXC80NC,DP-40	External
SEIBU	SO-12	φ150xφ72x450	E[150P,202H,300H,350M,350N].EN[250,300,350]M	External
SODICK	SO-12	φ150xφ72x450	22NC,30NC,35NC,A2C,A3C,A4C,AP1,AP3,AP3R,A3R,A4R,BM2,BM3,EPOC-2,3,4,FP2,K2CN,K3CN,EXC100,EXC100S AP[150,200,300].150W,330W,453W,654W,AW330,AW453	External
	SO-08	φ260xφ37x280	40NC,A5C,A6C,A7C,A10C,A15C,A5R,AH5,EPOC-5,AP300,AP330,AP450,AW330 Unit Filter tank	External
	SO-24	φ260xφ29x340	A30,A30R,A35R,A50,A65,A85,A85R EPOC-4,A4R,A10,A10R,AR7,AH65,AH85,AH10 K Series service tank	Internal
	SO-30	φ150xφ33x300	AP1L,AP3L	Internal
AMADA	SO-12	φ150xφ72x450	DM[25,25H]	External
CHARMILLES	H15475/1 SO-04B	φ150xφ31x375	ROBOFORM[20,30,31,40,41,100,200,400,810,2000,4000,7010,8010,9010] ELERODA[110,220,430]	External
AGIE	H15475/1	φ150xφ31x375	AGIETRON[50,100,200,300][1,2,3,4,5,6]U AGIEELOXMONDO[20,30]AGIETORON INTEGRAL[2,3]	External